



# **South Coast Deaf Social Group**



**2010 Gatherings  
for**



**“DEAF CLUB”**

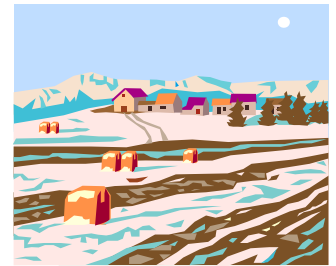
**at**

**Kiama Leagues Club**



**Summer**

**All Welcome  
Deaf, Friends, Visitors!  
(must be over 18 yrs)**



**Winter**



**Where :~**



**Kiama Leagues Club  
Corner of Terralong and Collins Street,  
KIAMA**



**Starting time :~ 6:00 pm to till ??? pm**



**When :~**

**Once every season...**



**Autumn**

**Saturday 27<sup>th</sup> February 2010 – Summer**

**Saturday 29<sup>th</sup> May 2010 – Autumn**

**Saturday 28<sup>th</sup> August 2010 – Winter**

**Saturday 30<sup>th</sup> October 2010 – Spring**

**Saturday 26<sup>th</sup> February 2011 – Summer**



**Spring**



**Contact Who :~ Matthew Moore (Deaf)  
0418 694 094 SMS ONLY**

